

1-050 Quarter-Turn Pr14.1 L13.5

Tool or hand operable, Optional finger pull, Optional pre-assembly

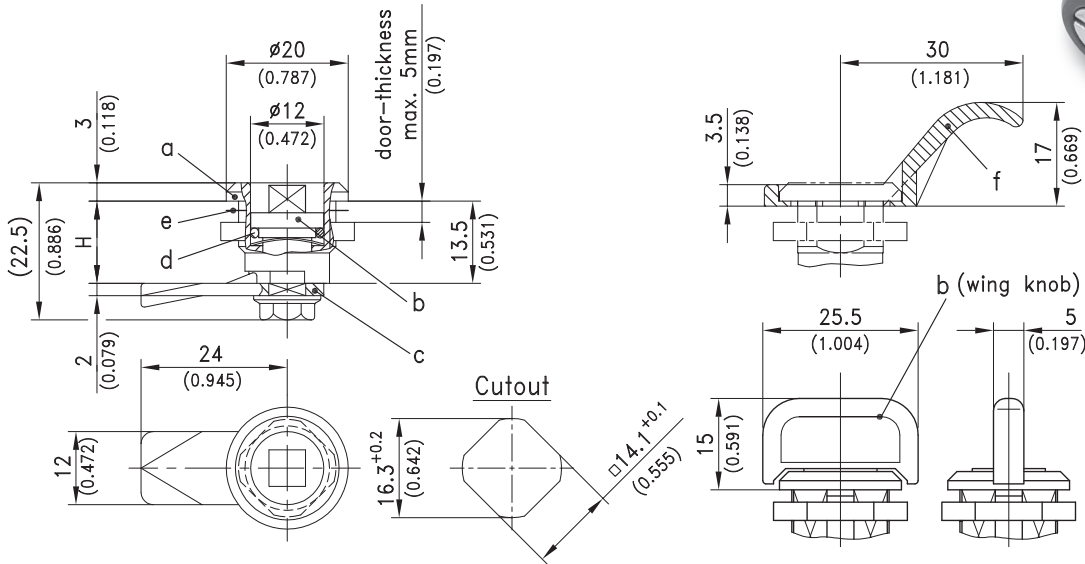


Product Notes:

- Pre-assembled Quarter-Turn can be installed in cutout
- Components can be pre-assembled by DIRAK upon request
- Optional finger pull (see Product System 1-060)
- RH and LH application
- Stainless steel - see Product System 7-050

Material:

- **Housing:** Zinc Die, Chrome Plated or Black or PA, Black
- **Insert:** Zinc Die, Chrome Plated or Black Coated or combination of PA, Black/Zinc Die
- **Screw and wave washer:** Steel, Zinc Plated
- **Key:** Zinc Die
- **Cam:** Steel, Zinc Plated
- **Finger pull:** PA, Black



Housing	PA Black	Zinc Die Chrome Plated	Zinc Die Black	Key Zinc Die	See Page
a) With nut	220-9020	220-9001	220-9003		
With grounding nut	220-9021	220-9002	220-9004		
With nut and grounding clip	220-9022	220-9005	220-9006		
b) Insert with screw and wave washer					
Triangular 6.5mm	-	220-9101	220-9104	204-0112	
Square 6mm	-	220-9102	220-9105	204-0111	
Slotted 1.5mm	-	220-9103	220-9106	-	
Socket hex. 4mm (5/32")	-	220-9118	220-9119	-	
Socket hex. 6mm	-	220-9107	-	-	
Knob, PA Black/Zinc Die*	220-9117	-	-	-	
c) Cam H in mm steel zinc plated					
7.5	220-0503	220-0503	220-0503		
13.5	220-0501	220-0501	220-0501		
19.5	220-0502	220-0502	220-0502		
Special cams					01.100
Optional:					
Water and dust tight according to IP65 by:					
d) O-Ring 9.1x1.6mm	220-0601	220-0601	220-0601		
e) Flat external seal	220-0701	220-0701	220-0701		
f) Finger pull	220-1301	220-1301	220-1301		
When using finger pull the H-dimension decreases by 0.8mm					
g) Assembling without O-ring	220-0001	220-0001	220-0001		
Assembling with O-ring	220-0002	220-0002	220-0002		
* Assembling to b) cam 90° to wing knob without O-ring	220-0006	-	-		
* Assembling to b) cam 90° to wing knob with O-ring	220-0007	-	-		

7-050 Quarter-Turn Pr14.1 L13.5

Tool operable, IP65, Stainless Steel, Optional pre-assembly

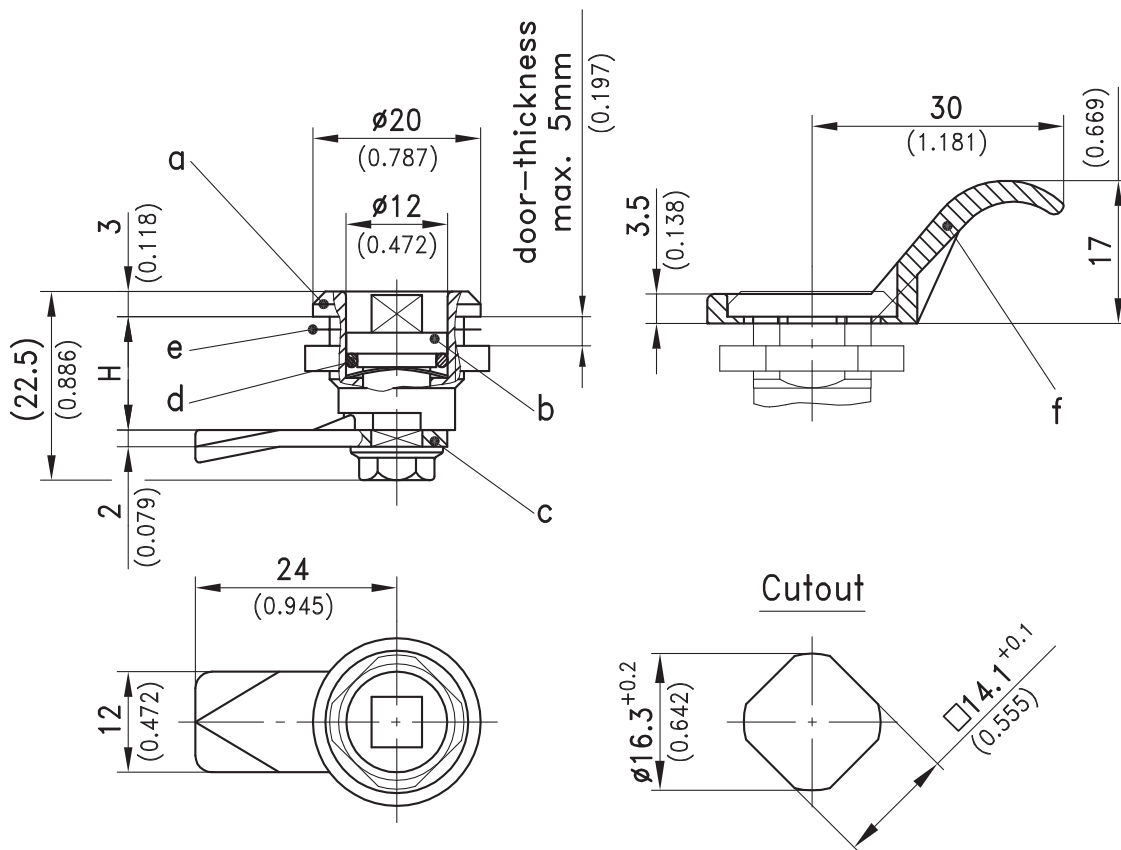


Product Notes:

- Quarter-Turn consists of three components which are combined to fit application
- Components can be pre-assembled by DIRAK upon request
- Pre-assembled Quarter-Turn can be installed in cutout
- RH and LH application
- Finger pull available - see Product System 1-060
- Zinc die or PA - see Product System 1-050

Material:

- **Housing, insert, screw, serrated washer, wave washer and cam:** Stainless Steel AISI 316
- **Key:** Zinc Die
- **Finger pull:** PA, Black



		Key (zinc die)	See Page
a) Housing with nut	220-9018		
b) Insert with screw, serrated washer and wave washer			
Triangular 6.5mm	220-9121	204-0112	
Square 6mm	220-9120	204-0111	
Slotted 1.5mm	220-9122		
c) Cam - H in mm			
7.5	220-0503.04		
13.5	220-0501.04		
19.5	220-0502.04		
Optional:			
Water and dust-tight according to IP65 DIN EN 60529 by:			
d) O-Ring 9.1x1.6mm	220-0601		
e) Flat external seal	220-0701		
f) Finger pull	220-1301		01.14
When using finger pull the H dimension decreases by 0.8mm.			
g) Assembling without O-ring	220-0001		
Assembling with O-ring	220-0002		